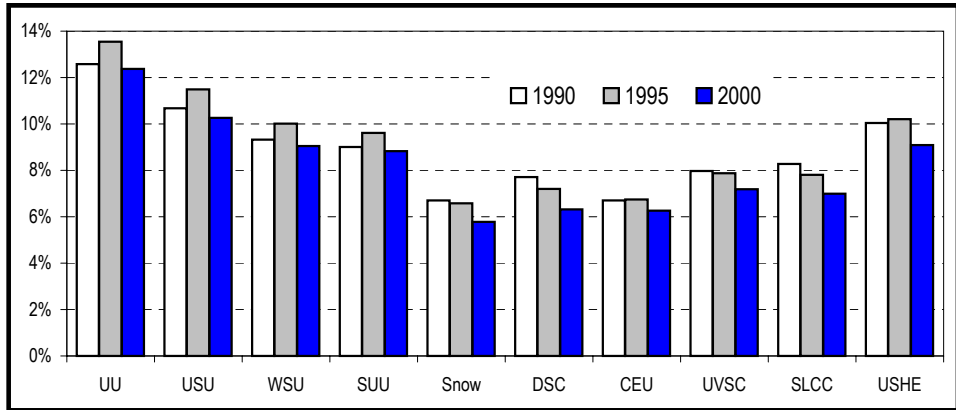


USHE Affordability Calculations

August 29, 2002

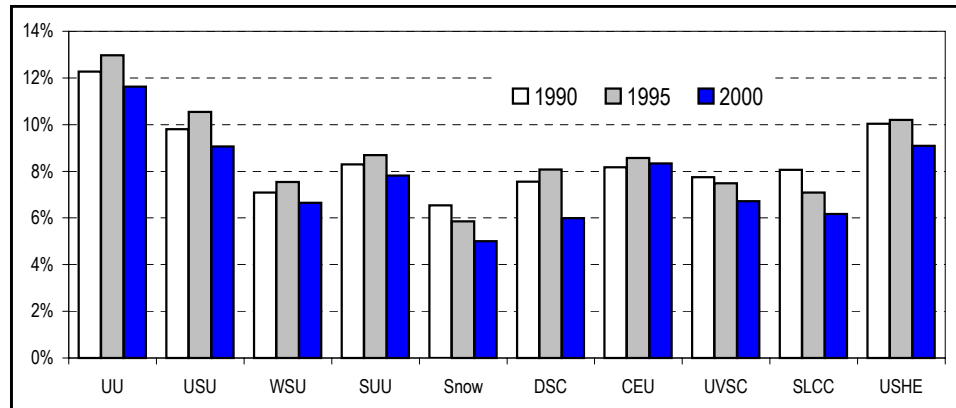
Tuition and Fees as a Percent of Utah Per Capita Income

	1990	1995	2000
UU	12.6%	13.6%	12.4%
USU	10.7%	11.5%	10.3%
WSU	9.3%	10.0%	9.0%
SUU	9.0%	9.6%	8.8%
Snow	6.7%	6.6%	5.8%
DSC	7.7%	7.2%	6.3%
CEU	6.7%	6.7%	6.3%
UVSC	8.0%	7.9%	7.2%
SLCC	8.3%	7.8%	7.0%
USHE	10.0%	10.2%	9.1%



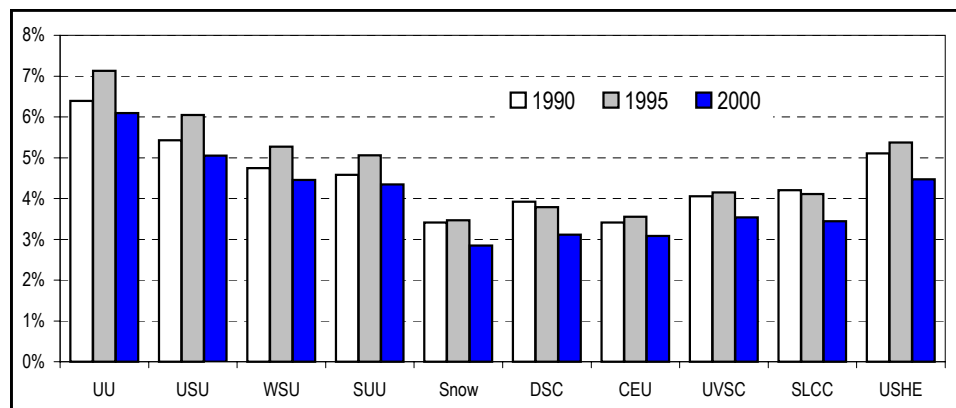
Tuition and Fees as a Percent of Three Major Draw County Per Capita Income

	1990	1995	2000
UU	12.3%	13.0%	11.6%
USU	9.8%	10.5%	9.1%
WSU	7.1%	7.5%	6.6%
SUU	8.3%	8.7%	7.8%
Snow	6.5%	5.9%	5.0%
DSC	7.6%	8.1%	6.0%
CEU	8.2%	8.6%	8.3%
UVSC	7.7%	7.5%	6.7%
SLCC	8.1%	7.1%	6.2%
USHE	10.0%	10.2%	9.1%



Tuition and Fees as a Percent Utah Median Household Income

	1990	1995	2000
UU	6.4%	7.1%	6.1%
USU	5.4%	6.0%	5.1%
WSU	4.7%	5.3%	4.5%
SUU	4.6%	5.1%	4.3%
Snow	3.4%	3.5%	2.8%
DSC	3.9%	3.8%	3.1%
CEU	3.4%	3.6%	3.1%
UVSC	4.1%	4.1%	3.5%
SLCC	4.2%	4.1%	3.4%
USHE	5.1%	5.4%	4.5%



Sources:

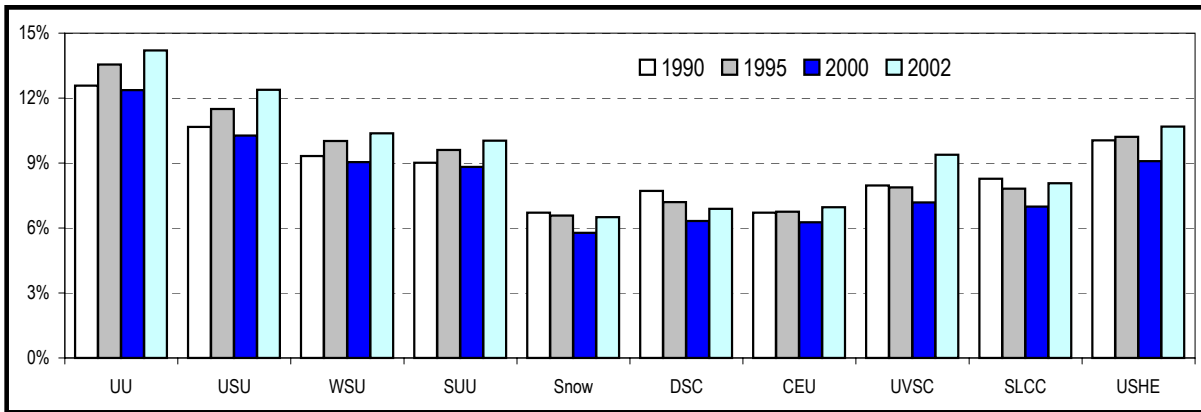
Per Capita Income -- U.S. Department of Commerce, Bureau of Economic Analysis, www.bea.doc.gov

Median Household Income -- U.S. Department of Commerce, Bureau of the Census, www.census.gov, and Governor's Office of Planning and

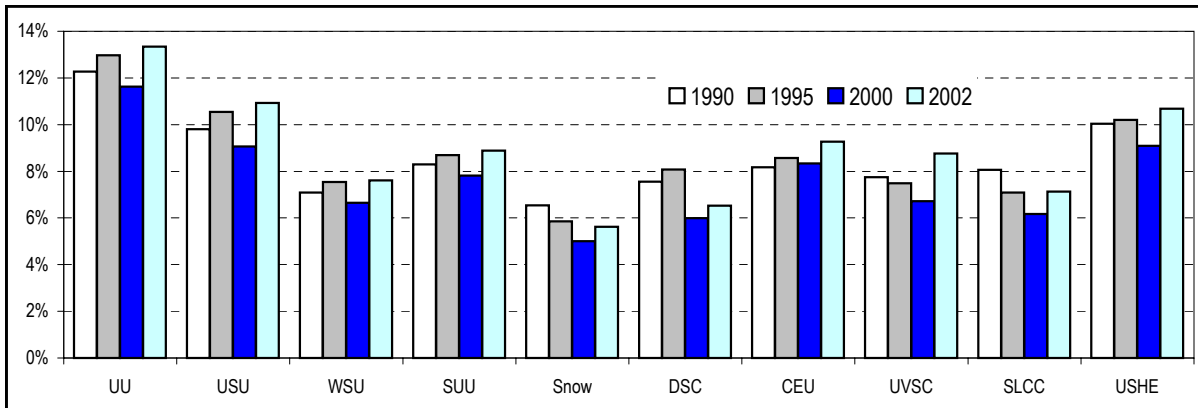
Budget, *Economic Report to the Governor 2003*, www.governor.state.ut.us

USHE Affordability Calculations

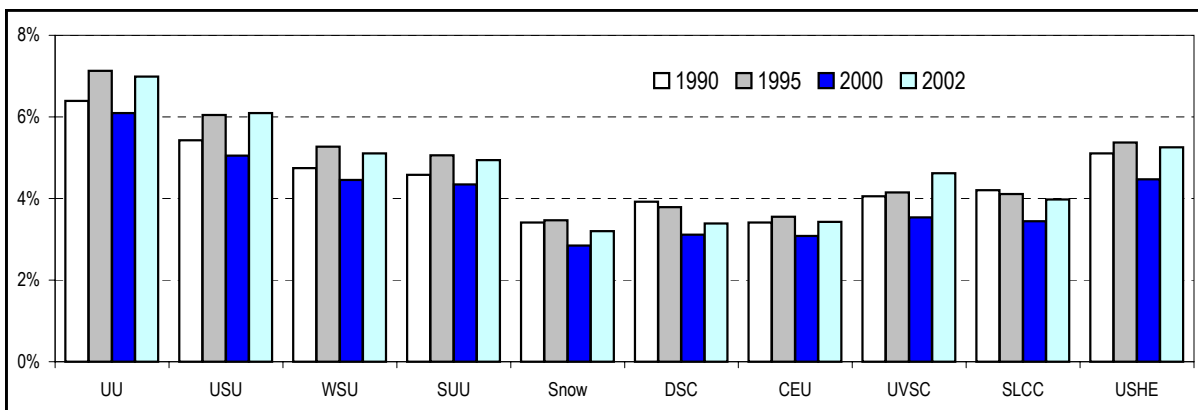
Tuition and Fees as a Percent of Utah Per Capita Income



Tuition and Fees as a Percent of Three Major Draw County Per Capita Income



Tuition and Fees as a Percent Utah Median Household Income



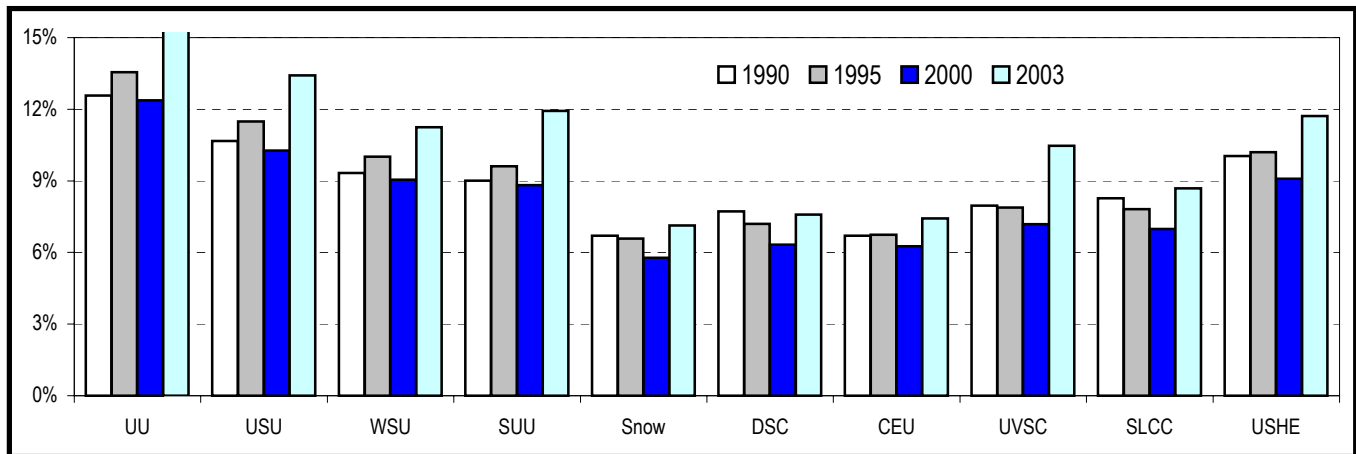
Sources:

Per Capita Income -- U.S. Department of Commerce, Bureau of Economic Analysis, www.bea.doc.gov

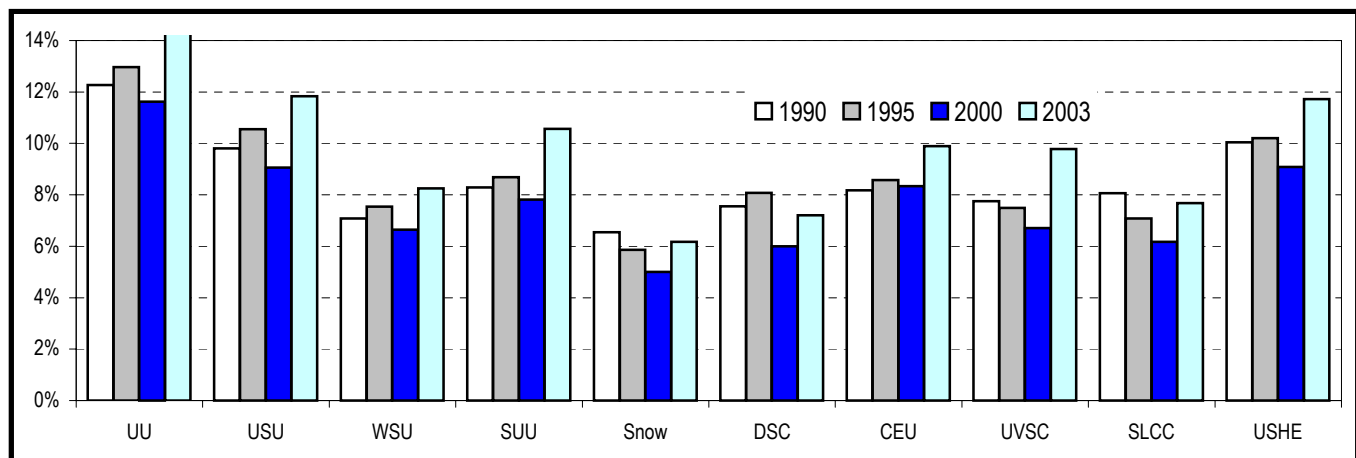
Median Household Income -- U.S. Department of Commerce, Bureau of the Census, www.census.gov, and Governor's Office of Planning and Budget, *Economic Report to the Governor 2003*, www.governor.state.ut.us

USHE Affordability Calculations

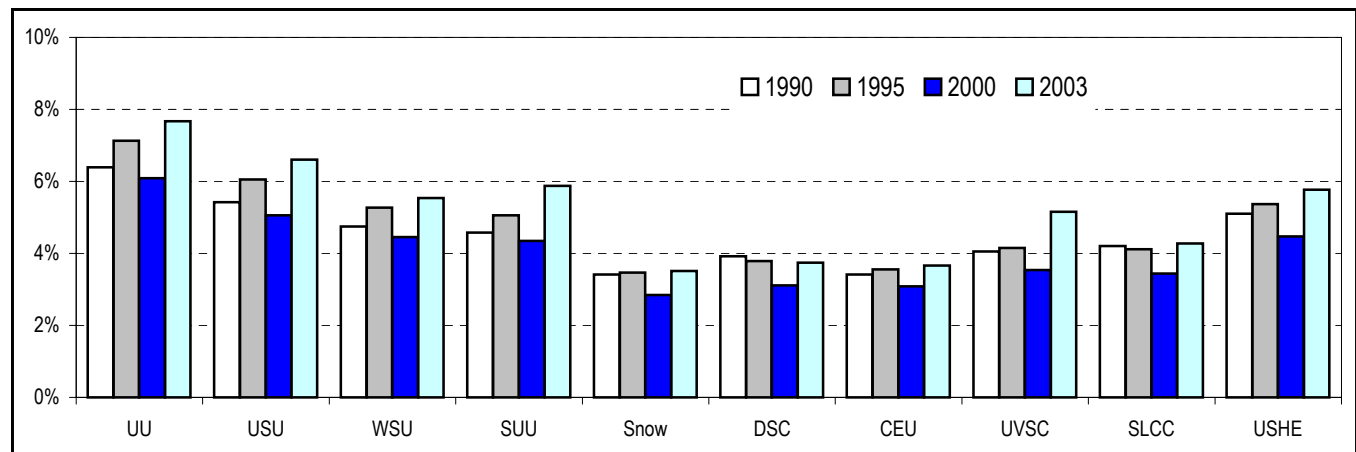
Tuition and Fees as a Percent of Utah Per Capita Income



Tuition and Fees as a Percent of Three Major Draw County Per Capita Income



Tuition and Fees as a Percent Utah Median Household Income



Sources:

Per Capita Income -- U.S. Department of Commerce, Bureau of Economic Analysis, www.bea.doc.gov

Median Household Income -- U.S. Department of Commerce, Bureau of the Census, www.census.gov, and Governor's Office of Planning and Budget, *Economic Report to the Governor 2003*, www.governor.state.ut.us

USHE Affordability Calculations

August 29, 2002

Tuition and Fees as a Percent of Utah Per Capita Income, 3-draw County Per Capita Income, and Median Household Income

1990	Income			Tuition & Fees 2 semester resident undergraduate tuition & fees	Percentages		
	Utah per capita income	3 draw county weighted average per capita income	Utah median household income (1989)		Tuition & fees as % of UT per capita income	Tuition & fees as % of 3- county per capita income	Tuition & fees as % of median household income
UU	\$14,983	\$15,360	\$29,470	\$1,884	12.6%	12.3%	6.4%
USU	14,983	16,311	29,470	1,599	10.7%	9.8%	5.4%
WSU	14,983	19,738	29,470	1,398	9.3%	7.1%	4.7%
SUU	14,983	16,286	29,470	1,350	9.0%	8.3%	4.6%
Snow	14,983	15,363	29,470	1,005	6.7%	6.5%	3.4%
DSC	14,983	15,294	29,470	1,156	7.7%	7.6%	3.9%
CEU	14,983	12,294	29,470	1,005	6.7%	8.2%	3.4%
UVSC	14,983	15,407	29,470	1,194	8.0%	7.7%	4.1%
SLCC	14,983	15,360	29,470	1,239	8.3%	8.1%	4.2%
USHE	\$14,983	\$14,983	\$29,470	\$1,505	10.0%	10.0%	5.1%

1995	Income			Tuition & Fees 2 semester resident undergraduate tuition & fees	Percentages		
	Utah per capita income	3 draw county weighted average per capita income	Utah median household income		Tuition & fees as % of UT per capita income	Tuition & fees as % of 3- county per capita income	Tuition & fees as % of median household income
UU	\$18,508	\$19,333	\$35,160	\$2,508	13.6%	13.0%	7.1%
USU	18,508	20,161	35,160	2,127	11.5%	10.5%	6.0%
WSU	18,508	24,579	35,160	1,854	10.0%	7.5%	5.3%
SUU	18,508	20,468	35,160	1,779	9.6%	8.7%	5.1%
Snow	18,508	20,778	35,160	1,218	6.6%	5.9%	3.5%
DSC	18,508	16,476	35,160	1,332	7.2%	8.1%	3.8%
CEU	18,508	14,572	35,160	1,249	6.7%	8.6%	3.6%
UVSC	18,508	19,473	35,160	1,459	7.9%	7.5%	4.1%
SLCC	18,508	20,412	35,160	1,446	7.8%	7.1%	4.1%
USHE	\$18,508	\$18,508	\$35,160	\$1,889	10.2%	10.2%	5.4%

2000	Income			Tuition & Fees 2 semester resident undergraduate tuition & fees	Percentages		
	UT per capita income	3 draw county weighted average per capita income	Utah median household income		Tuition & fees as % of UT per capita income	Tuition & fees as % of 3- county per capita income	Tuition & fees as % of median household income
UU	\$23,410	\$24,916	\$47,550	\$2,897	12.4%	11.6%	6.1%
USU	23,410	26,530	47,550	2,403	10.3%	9.1%	5.1%
WSU	23,410	31,876	47,550	2,118	9.0%	6.6%	4.5%
SUU	23,410	26,430	47,550	2,066	8.8%	7.8%	4.3%
Snow	23,410	27,067	47,550	1,354	5.8%	5.0%	2.8%
DSC	23,410	24,679	47,550	1,480	6.3%	6.0%	3.1%
CEU	23,410	17,594	47,550	1,466	6.3%	8.3%	3.1%
UVSC	23,410	25,056	47,550	1,682	7.2%	6.7%	3.5%
SLCC	23,410	26,500	47,550	1,636	7.0%	6.2%	3.4%
USHE	\$23,410	\$23,410	\$47,550	\$2,127	9.1%	9.1%	4.5%

2003	Income (Assume same as 2000)			Tuition & Fees 2 semester resident undergraduate tuition & fees	Percentages		
	UT per capita income	3 draw county weighted average per capita income	Utah median household income		Tuition & fees as % of UT per capita income	Tuition & fees as % of 3- county per capita income	Tuition & fees as % of median household income
UU	\$23,410	\$24,916	\$47,550	\$3,646	15.6%	14.6%	7.7%
USU	23,410	26,530	47,550	3,141	13.4%	11.8%	6.6%
WSU	23,410	31,876	47,550	2,632	11.2%	8.3%	5.5%
SUU	23,410	26,430	47,550	2,794	11.9%	10.6%	5.9%
Snow	23,410	27,067	47,550	1,670	7.1%	6.2%	3.5%
DSC	23,410	24,679	47,550	1,778	7.6%	7.2%	3.7%
CEU	23,410	17,594	47,550	1,740	7.4%	9.9%	3.7%
UVSC	23,410	25,056	47,550	2,450	10.5%	9.8%	5.2%
SLCC	23,410	26,500	47,550	2,035	8.7%	7.7%	4.3%
USHE	\$23,410	\$23,410	\$47,550	\$2,743	11.7%	11.7%	5.8%

Sources:

Per Capita Income -- U.S. Department of Commerce, Bureau of Economic Analysis, www.bea.doc.gov

Median Household Income -- U.S. Department of Commerce, Bureau of the Census, www.census.gov, and Governor's Office of Planning and Budget, *Economic Report to the Governor 2002*, www.governor.state.ut.us